

 QSTECH

A CVTE COMPANY

 CLW



ARTEMIS LT

Innovative Outdoor Fixed LED Display



I . Product Design Concept



Features of Outdoor Application

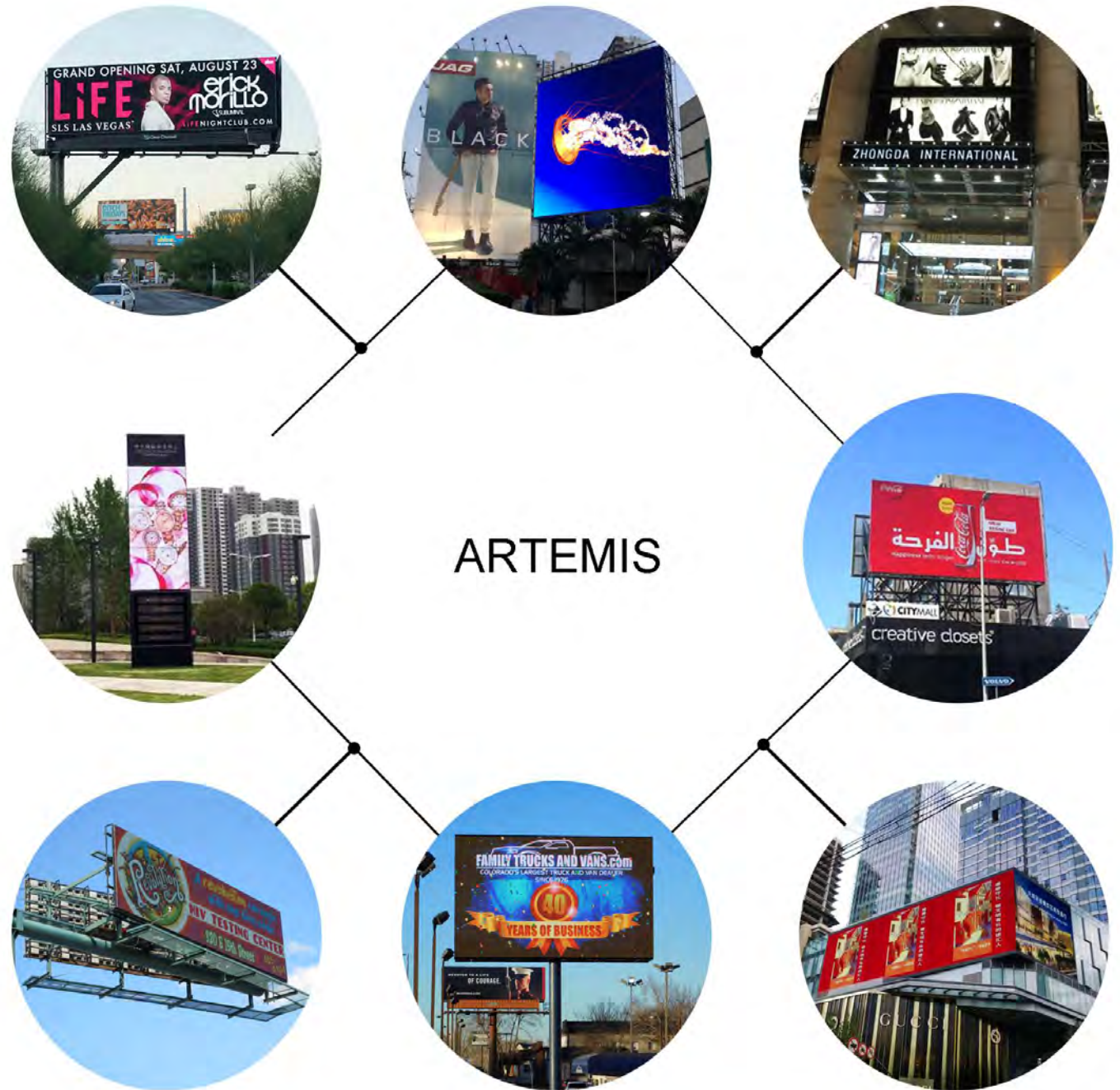


Greatly improve advertising efficiency;
Seamless splicing without area limitation;
HD image with vivid color;
Cluster control enables synchronous display.

A new generation of outdoor LED display product

Inherit outstanding performance of classical QS ARTEMIS series products.

28-years R&D, as well as application experience.



ARTEMIS LT

Lighter, Thinner and Faster
Outdoor Fixed Installation
Product



1. Product Size

P6. 67/P10

Panel Size (mm): $1280 \times 960 \times 98$
 $960 \times 960 \times 98$

* 98mm thickness from panel surface to installation surface, 140mm thickness for rear access and 120mm thickness for front access in total.



2. Product Appearance



◆ Front access



◆ Rear access



II. Product Functions



1. Ultra-slim and Ultra-light Structure

- Light-weight structure;
- 50% lighter and 40% thinner than traditional display;
- Space-saving, more than 30% cost cut down on steel structure;
- less requirements for load bearing of installation entity;
- Save manpower input.

ARTEMIS LT
Weight: 27KG/m²
Thickness: 98mm



Traditional Display
Weight: 52KG/m²
Thickness: 180mm

2. Low Power Consumption

- The product maximum power consumption is as low as 430W / m² @ 6000nits
- Average power consumption can be as low as 108W / m²
- Product adopts 3.8V + 2.8V shunt power supply to minimize energy loss
- Dynamic low power consumption-- high efficiency energy saving driver IC, intelligently eliminating the power loss of reactive power display according to the actual display gray level
- low power consumption -- low power supply voltage application, programmable four-gear constant current knee-point voltage, minimum as 0.15v

ARTEMIS LT ECO VS Traditional LED Display:

Maximum Power Consumption ↓ **32%**

Average power consumption ↓ **45%**

3. Low Temperature Rise, Better Stability

ARTEMIS ECO VS
Traditional LED Display:

LED Board Temperature ↓ 20°
Row Switch Transistor Temperature ↓ 20°
PCB Temperature ↓ 15°

The Advantage of Power Saving Led System:

- 1, Savings in electricity costs and greatly reducing the operating cost.
- 2, Decrease the temperature of the display module; Improve heat dissipation of whole system.
- 3, Reducing the investment in cable and power capacity.
- 4, Delay the LED attenuation speed, improve system reliability, and extend the life-span of the display

4. Better Precision

- Aluminum profile cabinet ensures better precision, thus to realize fast installation.
- Excellent screen flatness.



5. Fast Maintenance

- Front or rear access;
- Fast module disassembly;
- Fast maintenance for internal components of power supply box;
- Save maintenance costs.

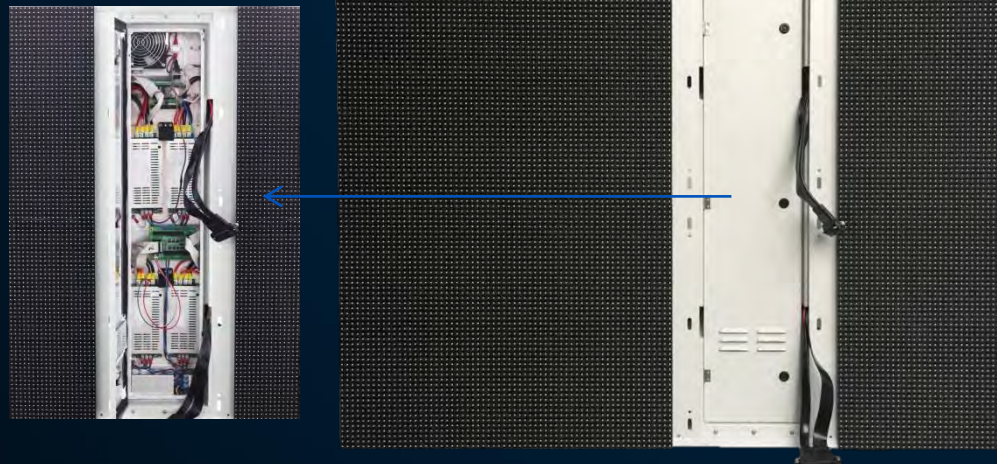
Front access

Rear access



Only 6 connection points on the Artemis LT large module are needed to be removed to conduct front maintenance. And remove two modules to open the power box and all parts in power box can be maintained.

More than four LED boards of traditional cabinet are needed to be removed in order to maintain the internal parts of the power box.



6. High IP Level

- Independent water-proof module, safe and stable, easy to maintain.
- IP67/IP54 for both front and rear side of module.



7. Intelligent Module, Real-time Monitoring

- Intelligent LED display status detection enables calibration data loading, and real-time monitoring including sending card status, receiving card status, module temperature, working time, module voltage, loose flat cable detection, etc.

Sending card status

Receiving card status

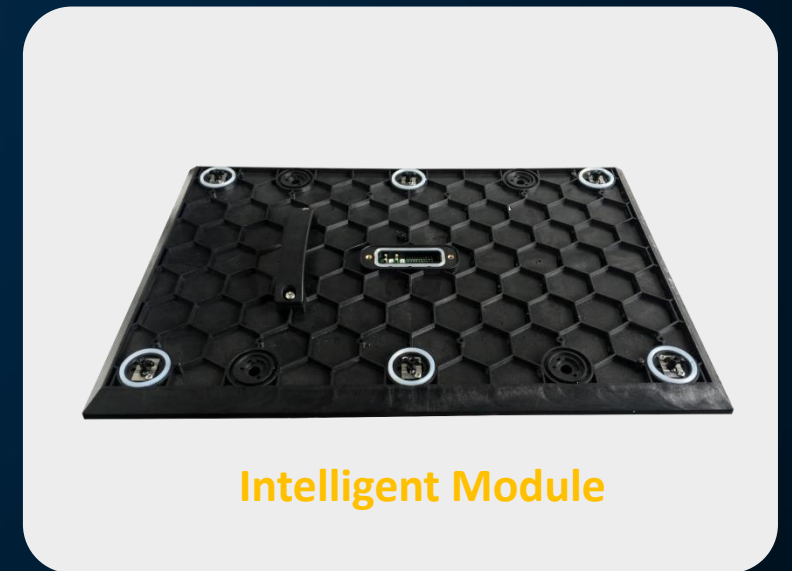
Module temperature

working time

Module voltage

loose flat cable detection

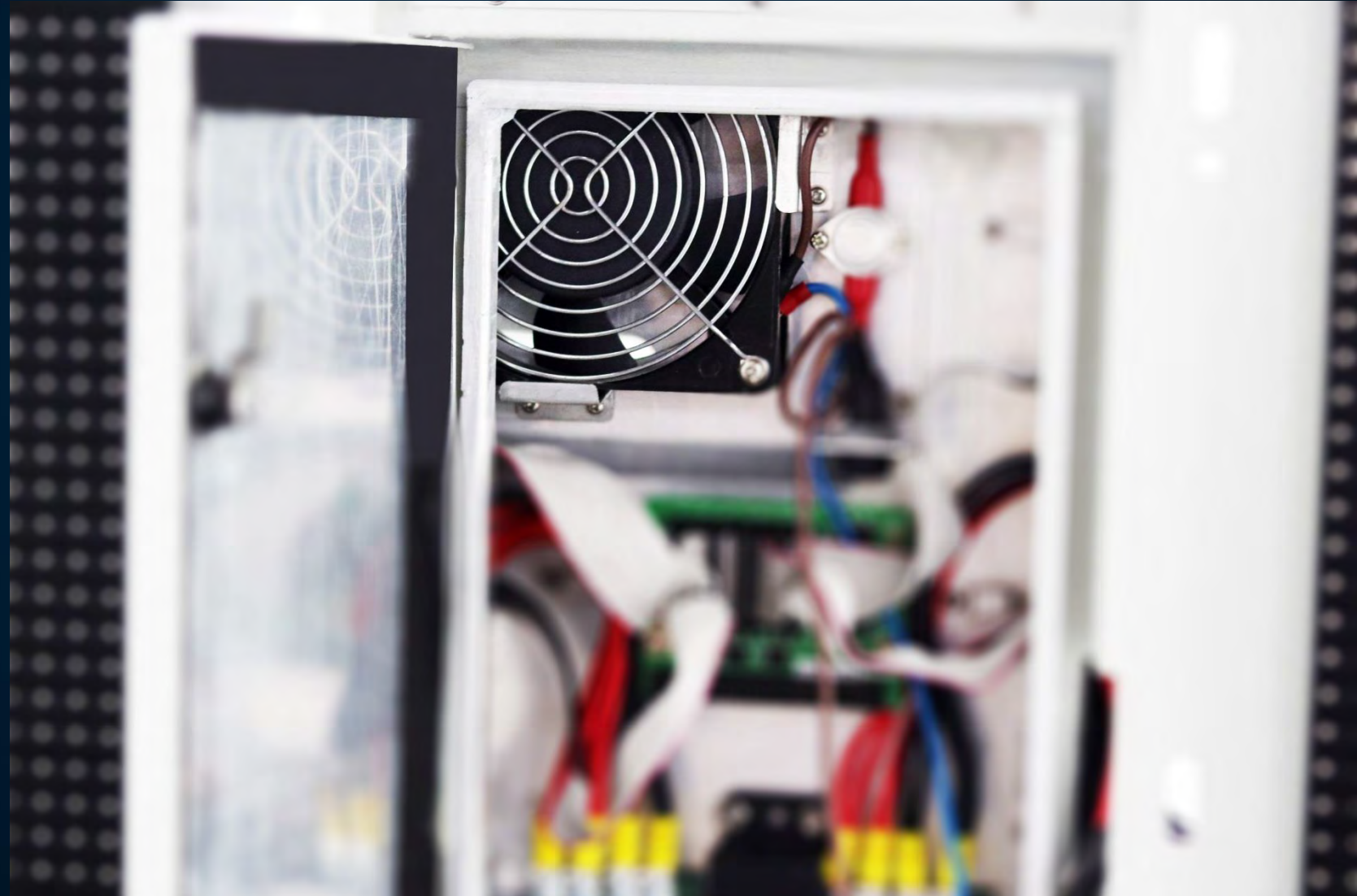
Real-time Monitoring



Intelligent Module

8. Good Heat Dissipation

- All-aluminum structure performs as the heat sink for power supply.
- Convection heat dissipation assisted by fan, and temperature can be automatically adjusted with the thermostat.
- Effectively prolong the service life of display screen.



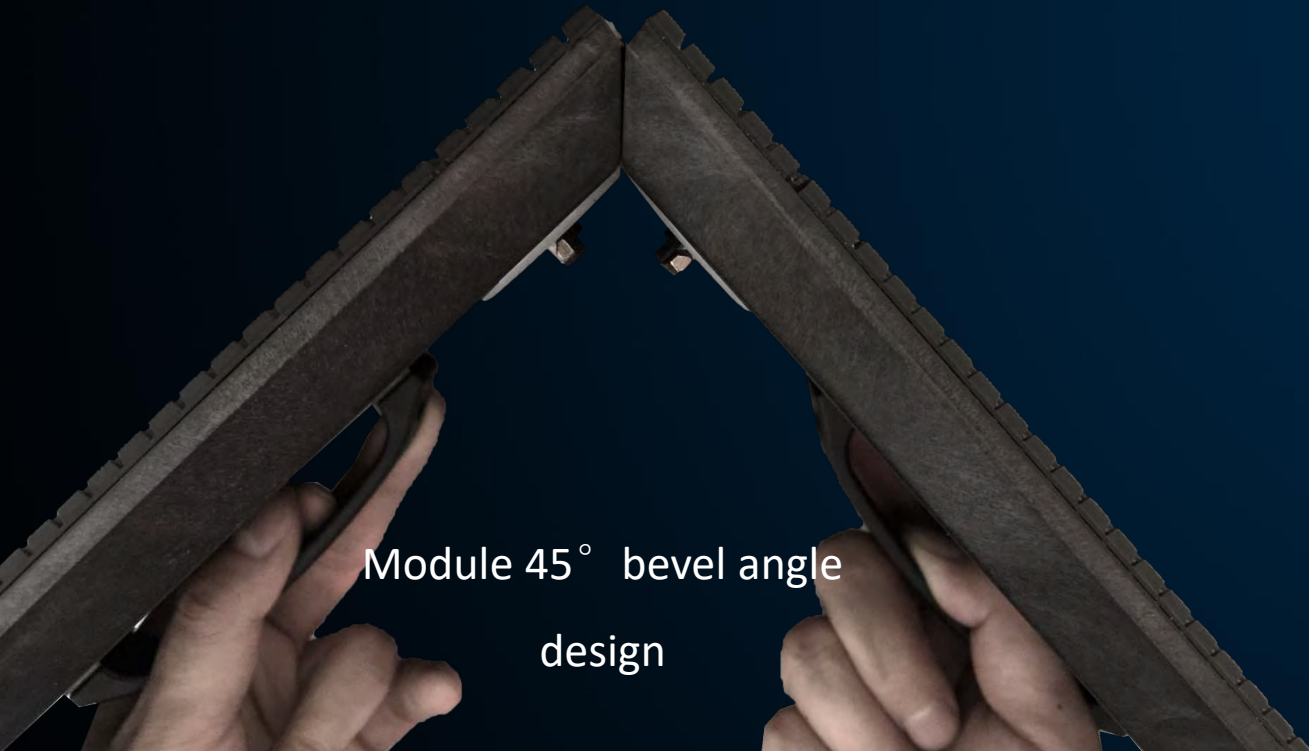
9. High Refresh Rate & High Contrast Ratio

- 1920Hz~3840Hz refresh rate;
- The brightness can reach 6000 cd/m², the image stays clear and lively even under outdoor direct sunlight;
- +2727-shaped LED with specially designed cover provides the contrast ratio over 5000:1;
- Wide viewing angle;
- Screen brightness can be automatically adjusted based on light changings.



10. 90° Seamless Splicing

- Support 90° seamless splicing, more creative splicing modes available.

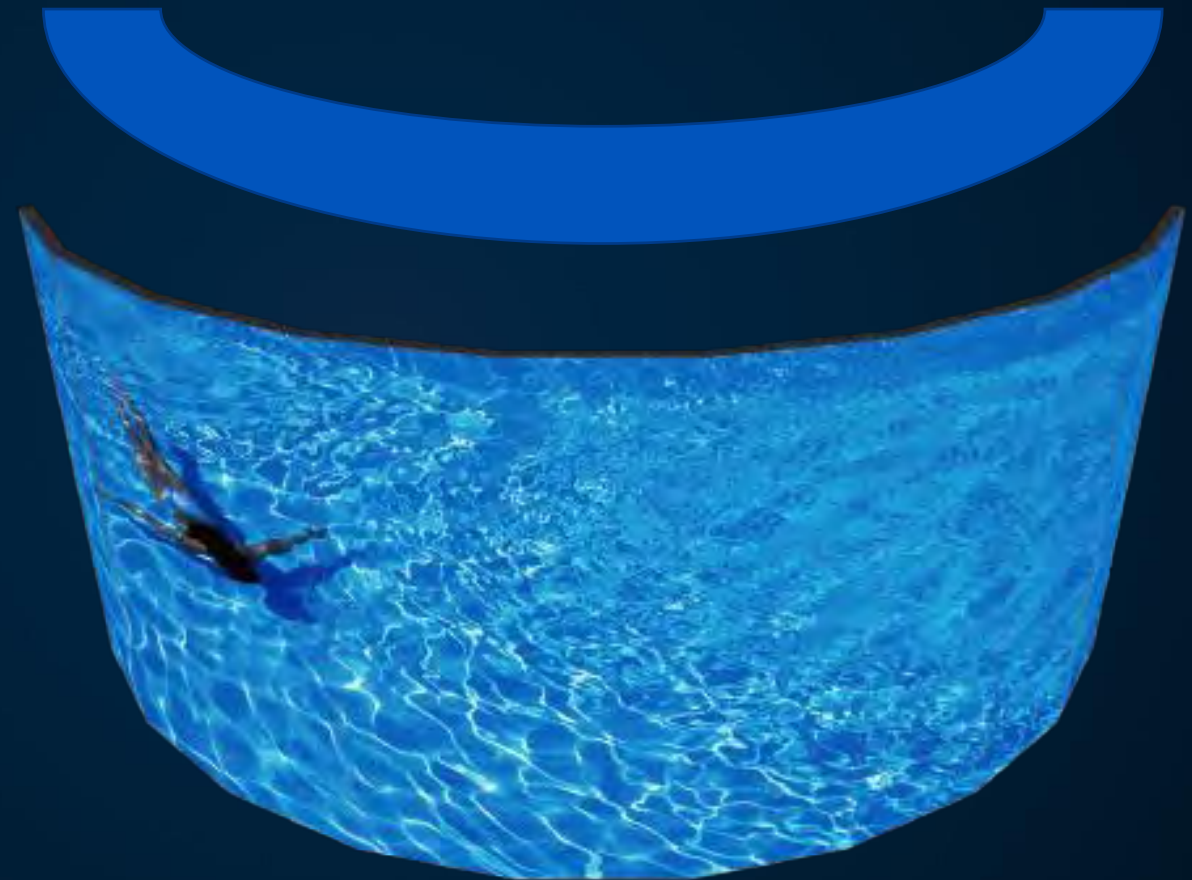


Module 45° bevel angle
design



11. Curved Splicing Available

- Support curved splicing with radius more than 5 meters.
- Wider viewing angle attracts a larger audience.



12. More Saving in Costs

- HOLLOWED OUT cabinet backside.
- No need for extra air conditioning equipment and decoration.
- lower steel structure and labor costs.



13. Effortless Installation

- The LED display installation can achieve stable waterproof performance and smooth splicing effect without requiring a engineer' s demanding level of skills for installer, and complex installation steps.



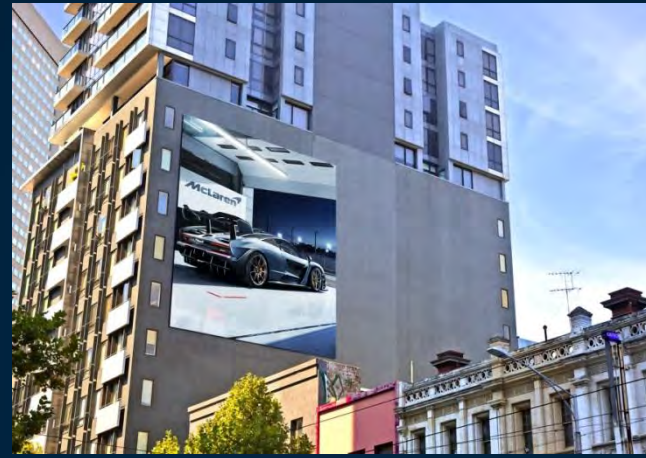
14. Easy Operation



Netherlands



Korea



UK



USA



Internet

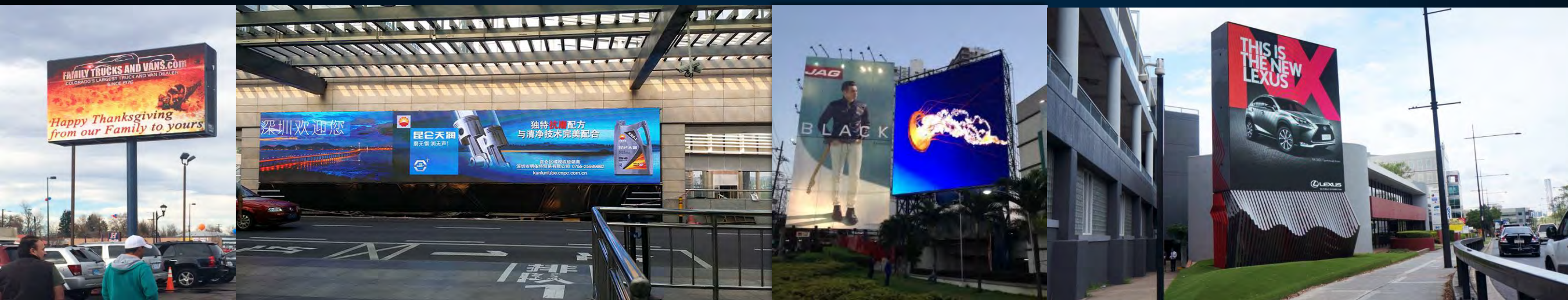
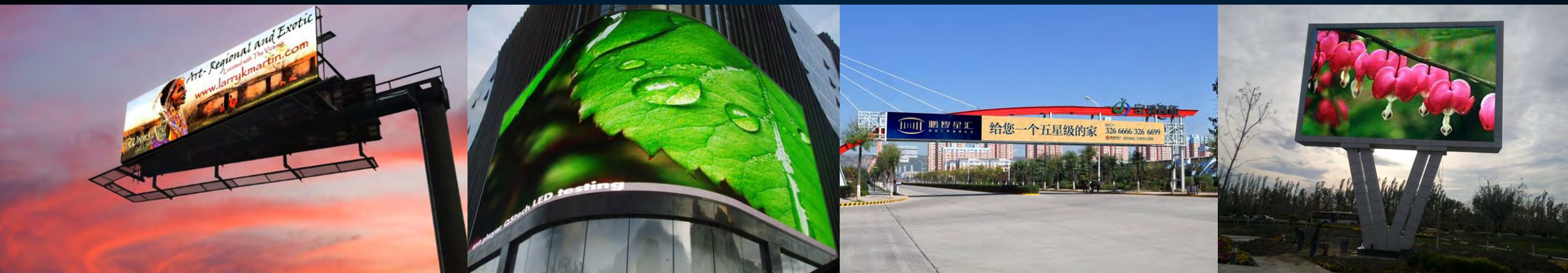
- Support synchronous display for multi LED screens;
- Centralized control realize efficient remote operation.

15. One-stop Application Solution Package

- LED Display
- Control System
- Cluster Control Publish
- Status Monitoring



16. Various Applications



ARTEMIS LT can be widely applied in different outdoor large and medium size billboards.



III. Performance Parameters



ARTEMIS LT LED Display Product Parameters

Model	OM-L 6670	OM-L C100	OM-E 6670E	OM-E C100E
LED Type	SMD	SMD	SMD	SMD
Pixel Pitch (mm)	6.67	10	6.67	10
Brightness (nits)	≥6500	≥6000	≥6500	≥6000
Refresh Rate (Hz)	≥3840	≥1920	≥3840	≥1920
Module Size (W*H)	320*480	320*480	320*480	320*480
Cabinet Size (W*H*D)	1280*960*98① / 960*960*98		1280*960*98① / 960*960*98	
Cabinet Resolution	192*144	128*96	192*144	128*96
Cabinet Material	Aluminum profile			
Power Consumption (Max. / Ave.) (W / m ²) @6000nits	680 / 205	680 / 205	534 / 135	534 / 135
Weight (kg / m ²)	27			
Gray Scale (Bit)	14			
Viewing Angle (H/V)	140° / 120°			
IP Rating (Front/Rear)	IP65 / IP54			
Input Voltage (V)	AC100-240V 50 / 60Hz			
Maintenance	Front / Rear			
Operating Temperature / Humidity (°C / RH)	-20~50 / 10~90%			

* 98mm thickness from panel surface to installation surface, 140mm thickness for rear access and 120mm thickness for front



A CVTE COMPANY



CLW

www.companyoman.com

M. : +968 94038087 | 94441888

E-mail: oman@companyledworld.com

QSTECH CO., LTD

www.qs-tech.com

Tel: +86 29 8177 9031/9033

E-mail: marketing@qs-tech.com