



X WALL-I All-In-One LED Display Terminal Application Solution

www.qs-tech.com

www.companyoman.com

Contents

- 01 Design Concept
- 02 Product Superiority
- 03 Product Specification
- 04 Application Scenarios
- 05 Company Profile

01

Design Concept

A better solution to tackle current problems faced
by indoor display devices

LCD/DLP Splicing Display



- Conspicuous splicing seam and incomplete information displaying
- Uneven module brightness and color displaying after long-term use
- Relatively narrow viewing angle can not provide consistent displaying effect from different angles

Projector



- Low brightness and susceptible to ambient light
- Inconsistent color attenuation causes obvious "Fusion Band" during displaying
- Short life-span with high maintenance cost

Traditional LED Display



- Installation and adjustment process require professional personnel, which can be time and labor consuming
- Extra external devices may require more space
- Single interaction mode needs professional operation

X WALL-I

All-In-One LED Display Terminal

Easy-to-use experience as common monitor



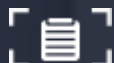
16:9 Aspect Ratio



Indicator Light



1920*1080 Resolution



OSD Menu



Plug-and-play Operation



Built-in Smart System



Remote Control



USB Reading



02

Product Superiority

Integrated design, simple operation and flexible application

Standard Size, yet More Choices

110"/ 138"/ 165"/ 220" Available

16:9 Golden Aspect Ratio

1920*1080 Standard Resolution

Foot-mounting / Wall-mounting Installation Modes



Integrated Design



High product stability and compatibility

3-in-1 integrated design for HUB Board, power supply and receiving card

Wireless connection between components, thus to reduce man-made errors during operation

Built-in control system, no need for extra display and control system

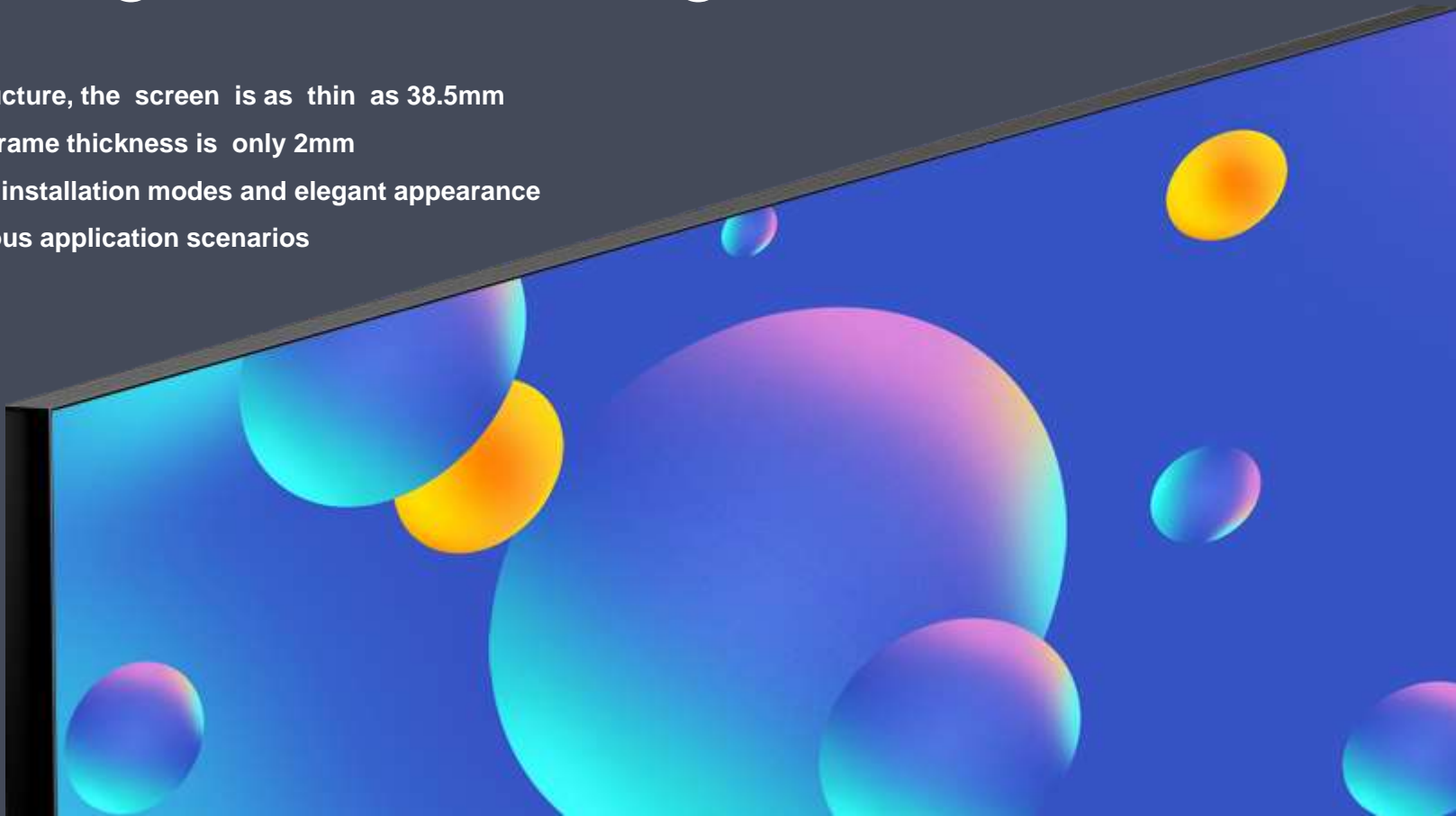
Low power consumption and noise-free indoor operation

Light-weight Structure Design

Ultra-slim structure, the screen is as thin as 38.5mm

Neat design, frame thickness is only 2mm

Space-saving installation modes and elegant appearance
can fit in various application scenarios



Flexible Installation Modes



Wall-mounting Installation



Foot-mounting (optional)



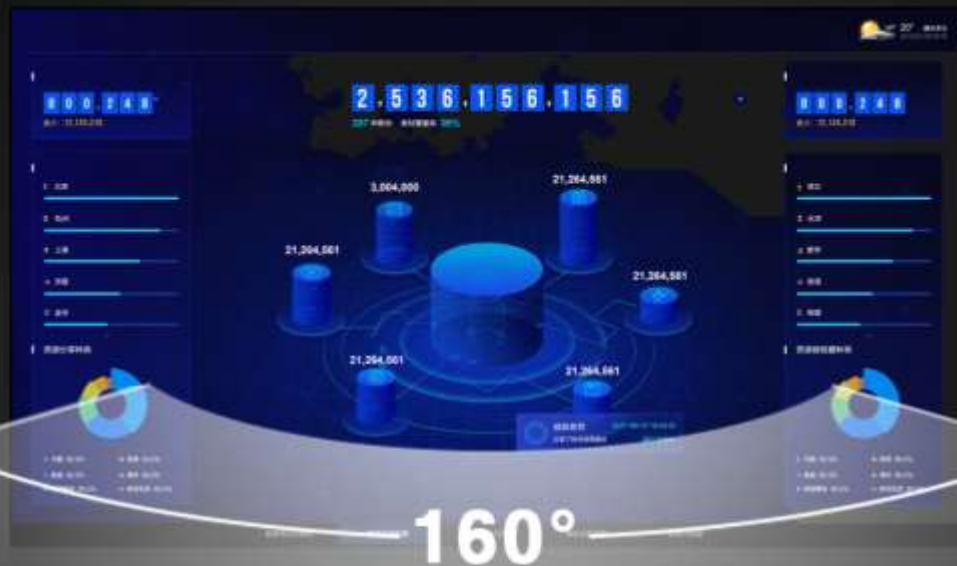
Hanging Installation

HD Image Quality



- High precision with seamless alignment
- HD image quality and lifelike color rendition
- High refresh rate and large color gamut
- Low brightness under high gray scale level
- Pixel-to-pixel calibration for whole screen
- Dynamic picture displaying in nanosecond response speed

Large Viewing Angle



160° super wide viewing angle, VIP watching experience even from side seats

Convenient Installation & Maintenance

Light-weight structure, less requirements for load-bearing

Fast installation, no need for complex steel structure thus to save on-site space

Front-access design supports hot swapping without extra need of maintenance path



User-friendly Operation



One-button ON/OFF and standby with indicator lights
Remote control, OSD menu adjustment (brightness/ color temperature/contrast ratio/volume/signal source)

Efficient Interaction

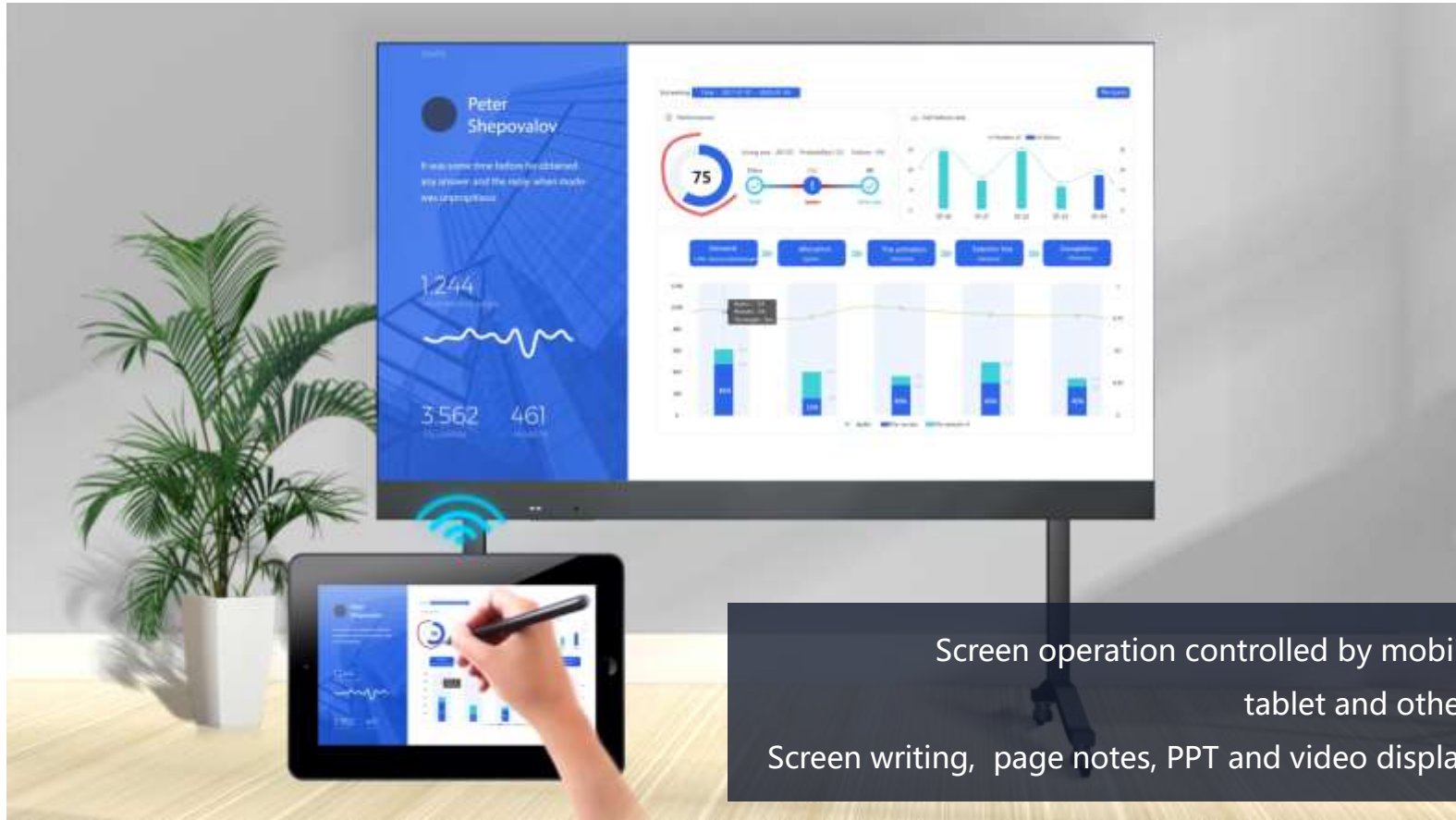


Support screen mirroring function for PC, mobile phone, smart platform and conference tablet

Support multi-window display for 4 devices simultaneously

Support USB and HDMI port input

Screen Control by Mobile Devices



Screen operation controlled by mobile phone, tablet and other devices
Screen writing, page notes, PPT and video displaying, etc.

03

Production Specification

X WALL-I All-in-one LED Display Terminal Product Parameter

Model	XWALL-I 110 "		XWALL-I 138 "		XWALL-I 165 "	XWALL-I 220 "
Display Diagonal (inches)	110 "		138 "		165 "	220 "
LED Type	MINI	SMD	SMD	SMD	SMD	SMD
Pixel Pitch (mm)	1.2	1.9	1.5	1.9	1.9	2.5
Brightness (nits)	100~550	100~620	100~550	100~620	100~620	100~620
Refresh Rate (Hz)	1920 / 3840					
Display Resolution	1920*1080	1280*720	1920*1080	1600*900	1920*1080	1920*1080
Display Size (mm)	2440*1373	2440*1373	3050*1716	3050*1716	3660*2059	4880*2745
Overall Size (WxHxD)	2454*1505*38.5		3064*1848*38.5		3674*2191*38.5	4894*2877*38.5
Module Size (W*H)	152.5*343	152.5*171	152.5*171		152.5*171	152.5*343
Cabinet Size (W*H*D)	610*343*38.5					
Cabinet Resolution	480*270	320*180	384*216	320*180	320*180	240*135
Cabinet Material	Die-casting aluminum					
Power Consumption (Max. / Ave.) (W)	1550 / 620	1260 / 500	2420 / 970	1970 / 790	2830 / 1130	6200 / 2480
Weight (kg)	145		245		300	515
Gray Scale (Bit)	13-16					
Viewing Angle (H/V)	160°/ 140°					
IP Rating	IP30					
Input Voltage (V)	AC100-240V 50 / 60Hz					
Installation Type	Bracket mounting / Wall mounting / Hanging					Wall mounting / Hanging
Maintenance	Front					
Operating Temperature / Humidity (°C / RH)	-10~40/10%~80% No condensation					

FP-I Panel Parameter

Model	FP-I 0953M	FP-I 1270M	FP-I 1270	FP-I 1588	FP-I 1910	FP-I 2542
LED Type	MINI		SMD			
Pixel Pitch (mm)	0.9	1.2	1.2	1.5	1.9	2.5
Brightness (nits)	100~550			100~620		
Refresh Rate (Hz)	1920 / 3840					
Module Size (W*H)	152.5*171	152.5*343	152.5*171	152.5*171	152.5*171	152.5*343
Cabinet Size (W*H*D)	610*343*38.5					
Cabinet Resolution	640*360	480*270	480*270	384*216	320*180	240*135
Cabinet Material	Die-casting aluminum					
Power Consumption (Max. / Ave.) (W / m ²)	500 / 167				406 / 135	
Weight (kg / per cabinet)	6.5					
Gray Scale (Bit)	13-16					
Viewing Angle (H/V)	160° / 140°					
IP Rating	IP30					
Input Voltage (V)	AC100-240V 50 / 60Hz					
Maintenance	Front					
Operating Temperature / Humidity (°C / RH)	-10~40 / 10~80% No condensation					

04

Application Scenarios

Wide Applications



X WALL-I all-in-one LED display terminal can be applied in conference rooms, lecture halls, classrooms, show rooms, command and control centers, TV and broadcast stations, private cinemas, etc.





05

Company Profile

QSTECH CO., LTD

Established in July 1992 and joined CVTE in 2018, QSTECH is a high-tech enterprise specializing in LED display product and solution with comprehensive system of R&D, product manufacturing, sales and service. Benefited from 28-year LED industry involvement and leading laboratory resources, professional sales and technical support teams, QSTECH has been dedicated to providing global customers with high-quality LED display solution and service.

CLW has recently assigned an exclusive partnership with Qstech starting from Oman to Qatar, Georgia and Lebanon, knowing that CLW is a leading led manufacturer in Beirut Lebanon, established in 2014 with a huge experience in the world of technology, media and signage . CLW has recently expanded in different territories by developing the best LED solutions to penetrate all markets on a high level with the support of Qstech a CVTE company.





Listed Parent Company CVTE

Advanced Laboratory Resources

Industry Association Member



28-Year R&D and Service Experience

Professional and Comprehensive
Product Certifications

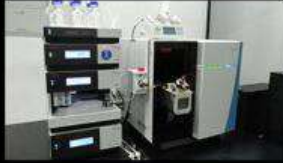
All-around After-sales Network



30000+ Global Application Cases

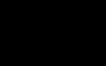
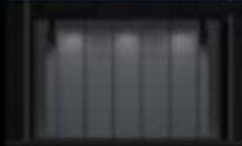
Professional Sales Team

Renowned Brand Reputation



Advanced Laboratory Environment

Company owns several comprehensive laboratories, including the ten-million-CNY EMC laboratory (SGS certification), which can provide an advanced laboratory environment for R&D and testing





A CVTE COMPANY



Tel: +968 94441888 | 94038287
WhatsApp: +961 3988838 | +96170502002
E-mail: Oman@companyledworld.com
www.companyoman.com